

HITACHI

**CONSTRUCTION
WHEEL LOADER**
ZW160-7 | ZW160PL-7



Reliable Solutions



Bucket Capacity : 2.8 yd³ – 3.6 yd³ (2 m³ – 2.8 m³)
Engine Output : 169 HP (126 kW)
Operating Weight : 28,462 lbs – 29,983 lbs (12,910 kg – 13,600 kg)
Breakout Force : 21,936 lbf (98 kN) | 23,523 lbf (105 kN)
Model Code : ZW160-7 | ZW160PL-7

ZW160
ZW160PL

A Legacy of Confidence

Known worldwide, Hitachi Construction Machinery has helped generations of builders, doers, and earth-movers accomplish their goals. Hitachi Construction Machinery Americas is the source for all U.S. and Latin American operations hoping to improve productivity and reduce costs — all while building our shared future.

Pioneering Progress Together

From dedicated Rental and Used machines business to servicing, parts sales, and remote diagnostic support, Hitachi Construction Machinery Americas has the know-how and desire to establish productive working partnerships across the region. A network of independent, local dealers providing sales and service support are at the ready, waiting to begin work on the next phase of your legacy.



Welcome to

Hitachi Construction

Endless Ambition

All of our machines have been built at state-of-the-art Hitachi Construction Machinery production facilities in Japan, after incorporating the unique needs of our North American customers. Designed for the toughest terrains, harshest environments and most intricate projects, we believe there is no job that couldn't make use of our machine.

Unwavering Dependability

Our dedication to reliability parallels our commitment for your comfort. Safety is non-negotiable; our machines adhere to the highest standards, ensuring your team's well-being. Count on Hitachi Construction Machinery Americas for peace of mind to ensure every team member returns home safely after a hard day's work.



Machinery Americas

Command with **QUALITY**

We're proud to introduce the latest range of wheel loaders worthy of the Hitachi Construction Machinery Americas equipment name.

At job sites across the world, our partners depend on the latest Hitachi Construction Machinery Americas equipment for increased productivity, improved operator comfort, efficient maintenance needs and innovative safety features proven to keep workers safe.

This brochure is a guide for fleet owners as well as day-to-day operators of this equipment who are hoping to save time, money, to dream big — and build bigger.

Building on decades of quality engineering, Hitachi Construction Machinery Americas presents the latest in its ZAXIS-7 lineup, the ZW160-7 & ZW160PL-7 wheel loaders.





TABLE OF CONTENTS

- 02** Who We Are
- 04** Introduction
- 06** Machine Highlights
- 08** Performance
- 10** Applications
- 12** Inside the Cab
- 14** Service & Maintenance
- 16** Safety
- 18** Specifications

LEADING LOADERS

A productivity powerhouse in either bucket or parallel fork versions, the ZW160-7 & ZW160PL-7 wheel loaders are packed with standard features. Offered with forks to aid equipment yards, logging facilities, and beyond — anywhere the utmost in productivity and operator control is needed.

Integrated tools like Approach Speed Control, Auto Power Up, and Payload Checker* help solve unique challenges faced by wheel loader operators while improving operator efficiency.

Backed up by the extensive Hitachi Construction Machine Americas network, explore how the ZW160-7 & ZW160PL-7 can reduce costs and boost your operations' results.

Improved Design Concept

Accomplish a wide variety of jobs with a powerful platform proven to perform in varied worksites, then extend the machine's capability as-needed with a range of GET (Ground Engaging Tools) attachments.



Intelligent Assists

Traction Control, Approach Speed Control, Auto Power Up function and a new Payload Checker* improve productivity to new levels while reducing operator fatigue.

Reliable & Powerful Engine

Proven Cummins engine, 5-speed transmission, and robust limited-slip differentials with predictable servicing bring power and improved cost control to an operation.

Increased Durability

Critical components are more protected from the environment, including the engine air filter and air conditioner. Standard intelligent, auto-reversing fan helps to prevent filter clogging.

Quality Materials

From non-slip surfaces to durable cab materials, the ZW160-7 & ZW160PL-7 are made to last.



First-Class Cab Comfort

Maximum cab space, visibility of controls, and operator line-of-sight; ROPS and FOPS certified.



Enhanced Productivity

Uptime is everything: lower fuel consumption and higher quality components mean less downtime and lower servicing costs.



Service & Maintenance

The ZW160-7 and ZW160PL-7 are workhorses with predictable service intervals, thanks to ConSite Air and field tested maintenance routines.

ZW160-7



Bucket Capacity : 2.8 yd³ – 3.6 yd³ (2 m³ – 2.8 m³)

Engine Output : 169 HP (126 kW)

Operating Weight : 28,462 lbs – 29,983 lbs (12,910 kg – 13,600 kg)

Breakout Force : 21,936 lbf (98 kN)

ZW160PL-7



Bucket Capacity : 2.8 yd³ – 3.6 yd³ (2 m³ – 2.8 m³)

Engine Output : 169 HP (126 kW)

Operating Weight : 28,462 lbs – 29,983 lbs (12,910 kg – 13,600 kg)

Breakout Force : 23,523 lbf (105 kN)

PERFORM with Confidence

Haul and load with the support of an overbuilt foundation, refined mechanicals, and modern operator assists. Proven 169 horsepower Cummins engine and powerful hydraulics give a Breakout Force of up to 23,523 lbf (105 kN). Larger than their predecessors, the ZW160-7 & ZW160PL-7 wheel loaders offer a bigger static tipping load and excel in these key areas:

Reliable Powertrain

Motivated by a reliable direct injection CUMMINS B4.5 engine, the ZW160-7 & ZW160PL-7 have the torque to lift, move, haul, and dump materials with ease.



Traction Control

Standard Traction Control maximizes breakout force while reducing tire slippage, useful for snow removal applications or in muddy / low grip conditions.

Modern Operator Assists

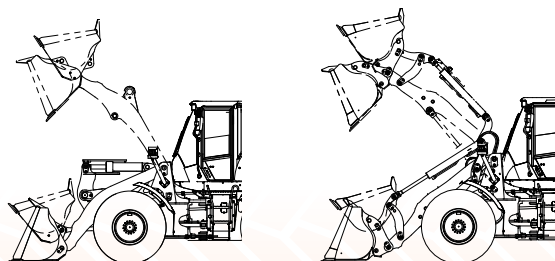
Approach Speed Control assigns a set speed for the wheel loader as it approaches a loading point. This allows for fewer pedal operations during loading, for reduced operator fatigue and lower fuel consumption.

Auto Power Up Function

New Auto Power Up functionality increases hill climbing performance of the ZW160-7 & ZW160PL-7 by identifying slopes and increasing power output to prevent engine speed from dropping when travelling uphill.

Precise Operator Control

Designed to boost driver confidence, and therefore efficiency, redesigned cab controls place key functions within easy reach for more intuitive operation.





**EFFICIENT
PRODUCTIVITY**

and lower cost per hour

PARALLEL LINK

Wheel Loader



Flexible **OPERATIONS**

Efficient and made to multi-task, the ZW160-7 & ZW160PL-7 have what it takes to accelerate productivity where you need it most. Popular in residential & commercial construction, road & highway infrastructure projects, and logging operations. Owners and operators alike are upgrading their results with help from these modern wheel loaders.

The ZW160PL-7 offers a **parallel link arm configuration** that keeps attachments parallel with the ground as the loader arms move up or down, giving operators more control while loading or unloading items. For close quarters work, parallel link arms also allow much greater visibility when using forks and other attachments.





“ The new ZW160-7 and ZW160PL-7 feature heavy-duty axles and a redesigned cab with a Multi-Function Monitor, Sub-Monitor, and LED Switch Panel. **These upgrades provide added comfort and productivity, previously found only in larger loaders.** ”



Rob Burke
Hitachi Construction Machinery Americas
Wheel Loader Service Trainer





13

14

15

12

16

17

11

10

4

1

2

3

5

6

8

7

9



OPTIMIZED Controls

Built with all-day comfort in mind and packed with smart features like the standard Payload Checker*, an advanced payload weighing system key to an operator's confidence. An all-new low vibration cab with more space, more comfortable operator positioning, and seat-mounted controls. A standard 8" LCD display and standard Bluetooth connectivity (including hands-free calling) ensure connectivity at all times.

- 1 Seat-mounted electric control levers** help to reduce fatigue.
- 2 Multifunction single-lever or dual-lever type control lever** options to suit your preference.
- 3 Integrated console on air-ride seat** gives a greater sense of control.
- 4 USB charging tablet and smartphone holder** helps you stay connected.
- 5 Console mounted sub-monitor controls** provide fast access to main functions.
- 6 Ergonomically designed adjustable armrests** so you can work comfortably.
- 7 Convenient storage space** keeps your workspace tidy and clutter-free.
- 8 Heavy duty, heated air-ride seat** with horizontal suspension.
- 9 Removable cup holder** for easy cleaning.
- 10 Sure-grip steering wheel** for confident control.
- 11 3.5" color LCD** in the front dashboard is easy to view.
- 12 Spacious ergonomic cab** makes for a more comfortable space.
- 13 Air conditioning controller** ensures a pleasant working environment.
- 14 Bluetooth®** for hands-free calls.
- 15 High-resolution 8" monitor** is easy to use and navigate.
- 16 Panel switch integrated functions** are user-friendly.
- 17 Remote adjustable heated mirrors (optional)** are easy to use.

* ZW160-7 only



SERVICE That Sticks

Protect your investment with proactive support services. Hitachi Construction Machinery Americas distribution network is dedicated to ensuring your productivity with our support team and dealers. Ask about how ConSite Air technology further increases uptime.



NO HASSLE Maintenance

From up-to-the-second remote management with ConSite to the leading Hitachi Construction Machinery Americas Certified Remanufactured Components program, maintenance support is second-to-none. Identify problems before they start and supercharge productivity with our behind-the-scenes data platform that allows for remote fleet diagnostic access.



SAFETY Suite

Innovative, standard safety features are core to maintaining an incident-free jobsite. Standard rear view camera and displays, plus a class-leading design with optimal visibility. 270° AERIAL ANGLE camera system (optional) and Rear Object Detection (optional) are essential features for tighter job sites, smaller work areas, and faster operator acclimatisation.

Rear View Monitor

Standard rear view camera with anti-glare in-cab display gives operators a wide field of view behind the machine.

Unmatched Visibility

See and be seen: redesigned cab, bright LED work lights, large reflective strips, and less interior clutter ensure operator line-of-sight in all conditions.

AERIAL ANGLE Cameras

Optional peripheral vision camera system provides a wide 270-degree bird's-eye view of the machine's immediate environment.

Emergency Steering Assist

An emergency electric pump delivers oil pressure for power steering even in the case of an emergency, allowing for normal steering, even if the engine fails.

Rear Obstacle Detection System

Human-focused systems such as Approach Speed Control, Auto Power Up, and Payload Checker* reduce operator strain, especially in challenging environments.

* ZW160-7 only

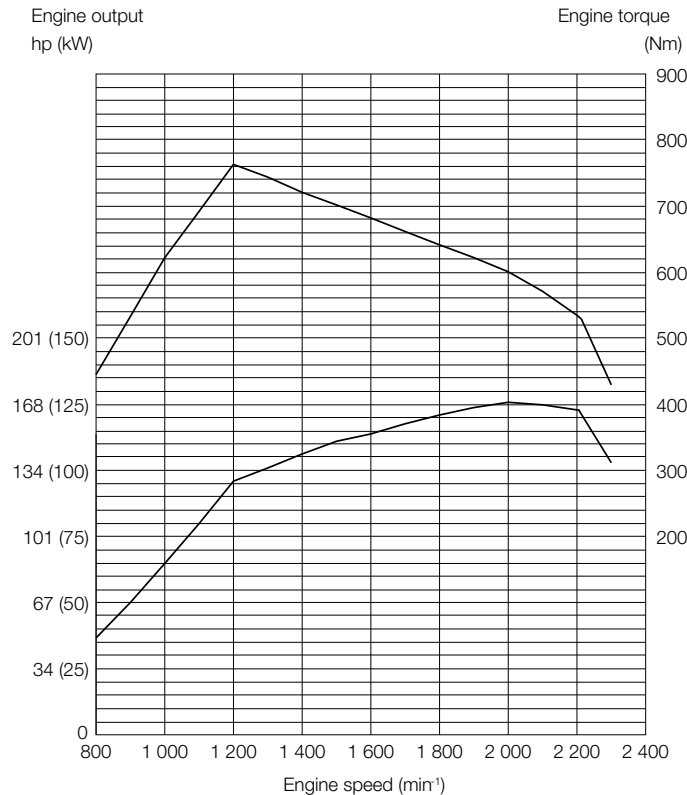




SPECIFICATIONS

ZW160-7 & ZW160PL-7

ENGINE	
Model	CUMMINS B4.5
Type	4 cycle water-cooled, direct injection
Aspiration	Turbocharger and intercooled
Aftertreatment	DPF+SCR system
No. of cylinders	4
Maximum power	
ECE R120 gross	169 HP (126 kW) at 2,000 min ⁻¹ (rpm)
ISO 9249: 2007 net	166 HP (124 kW) at 2,000 min ⁻¹ (rpm)
Rated power	
ISO 14396: 2002	165 HP (123 kW) at 2,200 min ⁻¹ (rpm)
ISO 9249: 2007 net	163 HP (122 kW) at 2,200 min ⁻¹ (rpm)
Maximum torque	
ISO 9249: 2007 net	755 Nm at 1,200 min ⁻¹ (rpm)
Bore and stroke	4.2" x 4.9" (107 mm X 124 mm)
Piston displacement	273.4 cu.in (4.46 L)
Batteries	2 x 12V
Air cleaner	Two element dry type with restriction indicator



POWER TRAIN	
Transmission	Electrical-controlled 2 motor hydrostatic transmission with summation gear box, Gear box: Fixed gear ratio, powershift countershaft type
Cooling method	Forced circulation type
Travel speed* Forward/Reverse	
1st	8.1/8.1 mph (13/13 km/h)
2nd	8.1/8.1 mph (13/13 km/h)
3rd	12.4/12.4 mph (20/20 km/h)
4th	24.2/24.2 mph (39/39 km/h)

*With 20.5 R25 (L3) tires
Data at Power Mode

AXLE AND FINAL DRIVE	
Drive system	Four-wheel drive system
Front and rear axle	Semi-floating
Front	Fixed to the front frame
Rear	Trunnion support
Reduction and differential gear	Two stage reduction with limited slip differential
Oscillation angle	Total 20° (+10°, -10°)
Final drives	Heavy-duty planetary, mounted inboard

TIRES	
Tire size	20.5 R25 (L3)

BRAKES	
Service brakes	Inboard mounted fully hydraulic 4 wheel wet disc brakes. Front and rear independent brake circuit, HST (Hydro Static Transmission) system provides additional hydraulic braking capacity
Parking brakes	Spring applied, hydraulically released, wet disc type

STEERING SYSTEM	
Type	Articulated frame steering
Steering angle	Each direction 40°; total 80°
Cylinders	Double-acting piston type
No. x Bore x Stroke	2 x 2.6" x 16.5" (2 x 65 mm x 419 mm)

HYDRAULIC SYSTEM	
Arm and bucket are controlled by multifunction lever	
Arm controls	Four position valve; raise, hold, lower, float
Bucket controls with automatic bucket return-to-dig control	
Three position valve; Roll back, hold, dump	
Main pump (Serve as steering pump)	
Gear type	
Maximum flow	51.2 gal (194 L) /min at 2,200 min ⁻¹ (rpm)
Maximum pressure	2,989 psi (20.6 MPa)
Brake and fan and pilot oil pump	
Gear type	
Maximum flow	11.9 gal (44.9 L) /min at 2,200 min ⁻¹ (rpm)
Maximum pressure	2,248 psi (15.5 MPa)
Hydraulic cylinders	
ZW160-7	
Type	Double acting type
No. x Bore x Stroke	Arm: 2 x 4.9" x 30" (2 x 125 mm x 760 mm)
	Bucket: 1 x 5.9" x 19.5" (1 x 150 mm x 495 mm)
Filters	Full-flow 10 micron return filter in reservoir
ZW160PL-7	
Type	Double acting type
No. x Bore x Stroke	Arm: 2 x 4.9" x 30" (2 x 125 mm x 760 mm)
	Bucket: 2 x 4.3" x 39.6" (2 x 110 mm x 1,005 mm)
Filters	Full-flow 10 micron return filter in reservoir
Hydraulic cycle times	
ZW160-7	
Lift arm raise	6.4 s
Lift arm lower	3.8 s
Bucket dump	1.6 s
Total	11.8 s
ZW160PL-7	
Lift arm raise	6.8 s
Lift arm lower	3.6 s
Bucket dump	3.4 s
Total	13.8 s

*Data at Power Mode

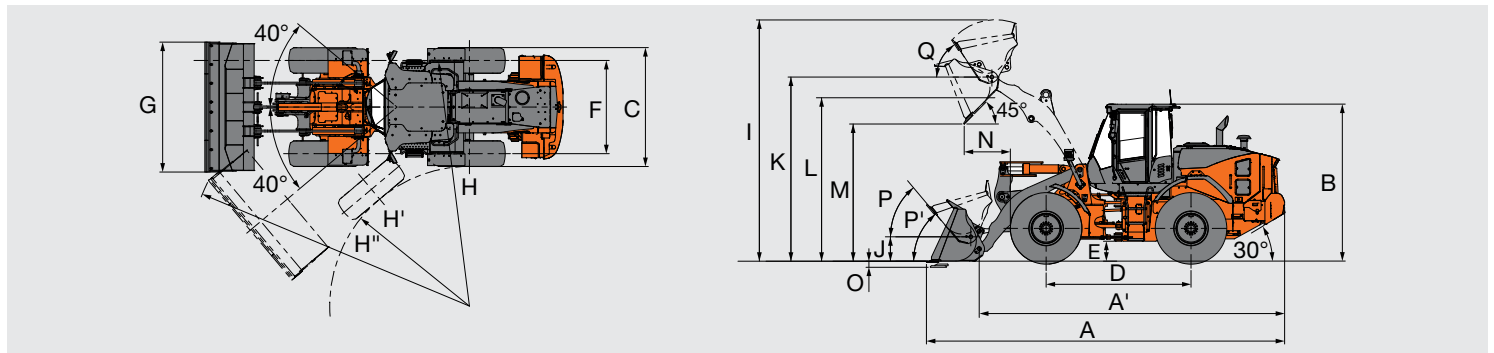
ENVIRONMENT	
Engine Emissions	
EPA Final Tier 4/EU stage V	
Sound level	
Sound level in cabin according to ISO 6396: 2008	67 LpA dB(A)
External sound level according To ISO 6395: 2008 and EU Directive 2000/14/EC	104 LwA dB(A)

SERVICE REFILL CAPACITIES	
Fuel tank	54.1 gal (205 L)
Engine coolant	5.3 gal (20 L)
Engine oil (Including oil pan)	4.3 gal (16 L)
Front axle differential and wheel hubs	6.6 gal (25 L)
Rear axle differential and wheel hubs	6.6 gal (25 L)
Hydraulic oil tank	21.2 gal (80 L)
DEF/AdBlue® tank	4.8 gal (18 L)

SPECIFICATIONS

ZW160-7

DIMENSIONS AND SPECIFICATIONS ZW160-7



Bucket type		Standard arm			High-lift arm
		General purpose		Light material	General purpose
		Bolt-on cutting edge	Quick coupler bolt-on cutting edge	Bolt-on cutting edge	Bolt-on cutting edge
Bucket Capacity (ISO heaped)	yd ³ (m ³)	3.1 (2.4)	2.8 (2.1)	3.6 (2.8)	3.1 (2.4)
Bucket Capacity (ISO struck)	yd ³ (m ³)	2.6 (2)	2.4 (1.8)	3.1 (2.3)	2.6 (2)
A Overall length	ft-in (mm)	24' 8" (7,525)	24' 8" (7,525)	25' 1" (7,635)	26' 4" (8,015)
A' Overall length, without bucket	ft-in (mm)	21' 1" (6,420)	21' 1" (6,420)	21' 1" (6,420)	22' 8" (6,905)
B Overall height, up to cab top	ft-in (mm)	10' 9" (3,275)	10' 9" (3,275)	10' 9" (3,275)	10' 9" (3,275)
C Width over tires	ft-in (mm)	8' 2" (2,500)	8' 2" (2,500)	8' 2" (2,500)	8' 2" (2,500)
D Wheel base	ft-in (mm)	9' 10" (3,000)	9' 10" (3,000)	9' 10" (3,000)	9' 10" (3,000)
E Ground clearance	ft-in (mm)	1' 5" (425)	1' 5" (425)	1' 5" (425)	1' 5" (425)
F Tread	ft-in (mm)	6' 4" (1,930)	6' 4" (1,930)	6' 4" (1,930)	6' 4" (1,930)
G Bucket width	ft-in (mm)	8' 5" (2,560)	8' 5" (2,560)	8' 5" (2,560)	8' 5" (2,560)
H Turning radius, center of out tire	ft-in (mm)	16' 8" (5,085)	16' 8" (5,085)	16' 8" (5,085)	16' 8" (5,085)
H' Turning radius, inside of inside tire	ft-in (mm)	9' 5" (2,870)	9' 5" (2,870)	9' 5" (2,870)	9' 5" (2,870)
H'' Turning radius, outside of Buc at carry	ft-in (mm)	19' 7" (5,975)	19' 9" (6,015)	19' 8" (6,005)	20' 4" (6,185)
I Overall operating height at full height	ft-in (mm)	49' 10" (15,180)	17' 2" (5,225)	17' 5" (5,300)	18' 3" (5,550)
J Height of bucket pin at carry	ft-in (mm)	1' 11" (575)	1' 11" (575)	1' 11" (575)	1' 11" (575)
K Height of bucket pin at fully raised	ft-in (mm)	12' 7" (3,835)	12' 7" (3,835)	12' 7" (3,835)	13' 10" (4,205)
L Lift-arm clearance at full height	ft-in (mm)	11' 8" (3,550)	11' 8" (3,550)	11' 8" (3,550)	12' 10" (3,920)
M Dumping clearance at 45°, full height	ft-in (mm)	9' 2" (2,790)	8' 10" (2,695)	8' 11" (2,715)	10' 4" (3,160)
N Reach 45° dump full height	ft-in (mm)	3' 5" (1,030)	3' 9" (1,130)	3' 8" (1,105)	4' 0" (1,215)
O Digging depth	ft-in (mm)	3.9" (100)	3.7" (95)	3.9" (100)	8.9" (225)
P Max roll back at carry	deg	51	51	51	51
P' Max roll back at ground	deg	43	43	43	45
Q Roll back angle at full height	deg	59	59	59	54
Bucket weight	lb (kg)	2,293 (1,040)	2,822 (1,280)	2,425 (1,100)	2,293 (1,040)
Static tipping load, straight	lb (kg)	22,884 (10,380)	21,363 (9,690)	22,686 (10,290)	18,188 (8,250)
Static tipping load, 40° turn	lb (kg)	19,842 (9,000)	18,453 (8,370)	19,665 (8,920)	15,675 (7,110)
Breakout force	(kN)	98	85	88	91
Breakout force	lbf (kgf)	21,936 (9,950)	19,092 (8,660)	20,171 (8,980)	20,415 (9,260)
Operating weight	lb (kg)	28,660 (13,000)	29,189 (13,240)	28,792 (13,060)	29,101 (13,200)

Bucket type		Standard arm	Standard arm with Quick coupler	High-lift arm
		General purpose	General purpose	General purpose
		Bolt-on cutting edge	Bolt-on cutting edge	Bolt-on cutting edge
Static tipping load ISO 14397-1: 2007 (Section 1-5) *	Straight lb (kg)	22,260 (10,100)	20,770 (9,420)	17,680 (8,020)
	Full turn lb (kg)	19,240 (8,730)	17,880 (8,110)	15,190 (6,890)
Breakout force		kN	81	77
		lbf (kgf)	18,140 (8,230)	17,240 (7,820)
Operating weight * (With ROPS / FOPS Cab)		28,950 (13,130)	29,450 (13,360)	29,390 (13,330)

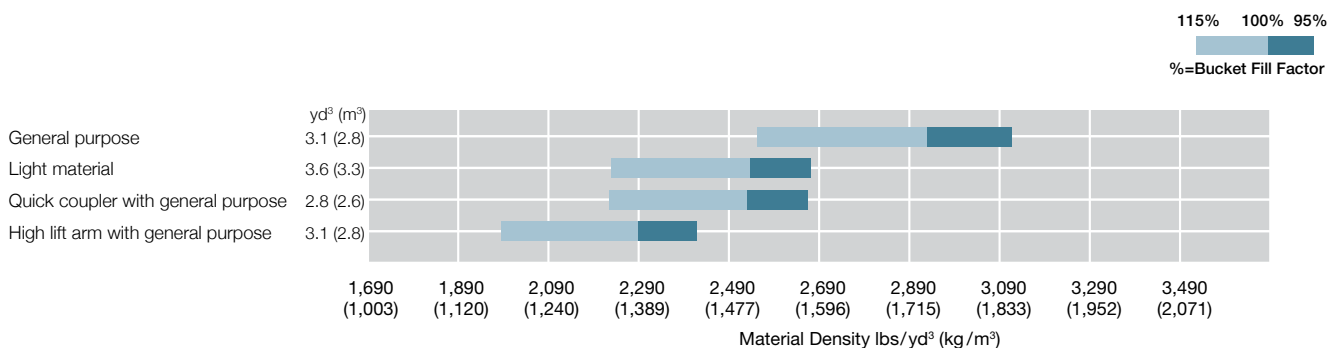
Note: All dimensions, weight and performance data based on ISO 6746-1 : 1987, ISO 7137 : 2009 and ISO 7546 : 1983

: Static tipping load and operating weight marked with include 20.5R25 (L3) tires (No ballast) with lubricants, full fuel tank and operator. Machine stability and operating weight depend on counterweight, tire size and other attachments.

WEIGHT CHANGE

Option item		Operating weight lb (kg)	Tipping load lb (kg)		Overall width in (mm) (outside tire)	Overall height in (mm)	Overall length in (mm)
			Straight	Full turn			
Tires	20.5R25 (L3) VJ TZ	+22 (+10)	+22 (+10)	+22 (+10)	±0	-0.2 (-5)	+0.2 (+5)
Belly guard		+154 (+70)	+88 (+40)	+88 (+40)	±0	±0	±0

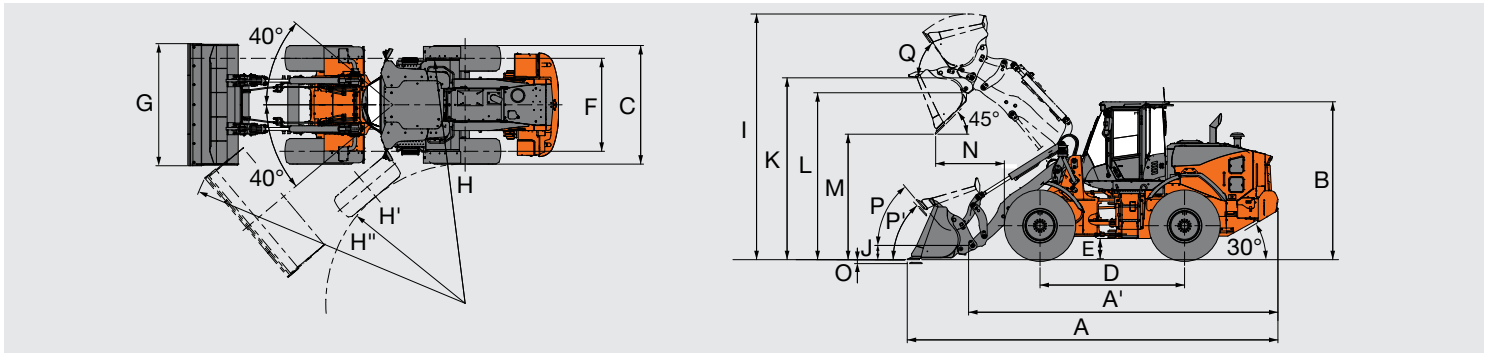
BUCKET SELECTION GUIDE



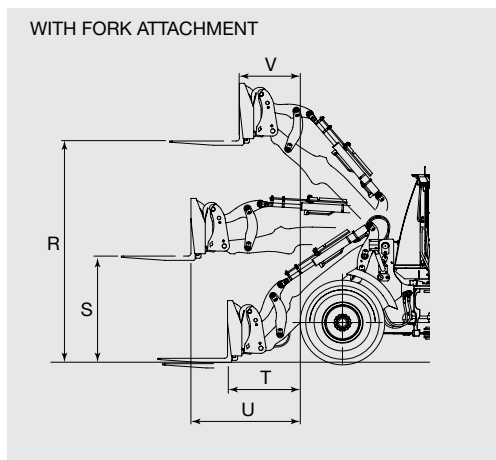
SPECIFICATIONS

ZW160PL-7

DIMENSIONS AND SPECIFICATIONS ZW160PL-7



Bucket type			Quick coupler	
			Bolt-on cutting edge	
Bucket capacity	ISO 7546: 1983 Heaped	yd ³ (m ³)	2.8 (2.1)	
	ISO 7546: 1983 Struck	yd ³ (m ³)	2.4 (1.8)	
A	Overall length	ft-in (mm)	25' 9" (7 840)	
A'	Overall length, without bucket	ft-in (mm)	20' 9" (6 315)	
B	Overall height, up to cab top	ft-in (mm)	10' 9" (3 275)	
C	Width over tires, outside tire	ft-in (mm)	8' 2" (2 500)	
D	Wheel base	ft-in (mm)	9' 10" (3 000)	
E	Ground clearance, minimum	ft-in (mm)	1' 5" (425)	
F	Tread	ft-in (mm)	6' 4" (1 930)	
G	Bucket width	ft-in (mm)	8' 5" (2 560)	
H	Turning radius, centerline of outside tire	ft-in (mm)	16' 8" (5 085)	
H'	Turning radius to inside of tires	ft-in (mm)	9' 5" (2 870)	
H''	Loader clearance radius, bucket in carry position	ft-in (mm)	19' 9" (6 025)	
I	Overall operating height, bucket full raise	ft-in (mm)	17' 10" (5 430)	
J	Carry height of bucket pin, at carry position	ft-in (mm)	1' 9" (525)	
K	Height to bucket hinge pin, fully raised	ft-in (mm)	13' 0" (3 970)	
L	Lift arm clearance at max lift	ft-in (mm)	12' 1" (3 680)	
M	Dumping clearance 45°, full height	ft-in (mm)	8' 10" (2 700)	
N	Reach, 45° dump, full height	ft-in (mm)	4' 5" (1 355)	
O	Digging depth, horizontal digging angle	in (mm)	4" (115)	
P	Max. roll back at carry position	deg	54	
P'	Max. roll back at ground level	deg	47	
Q	Roll back angle at full height	deg	56	



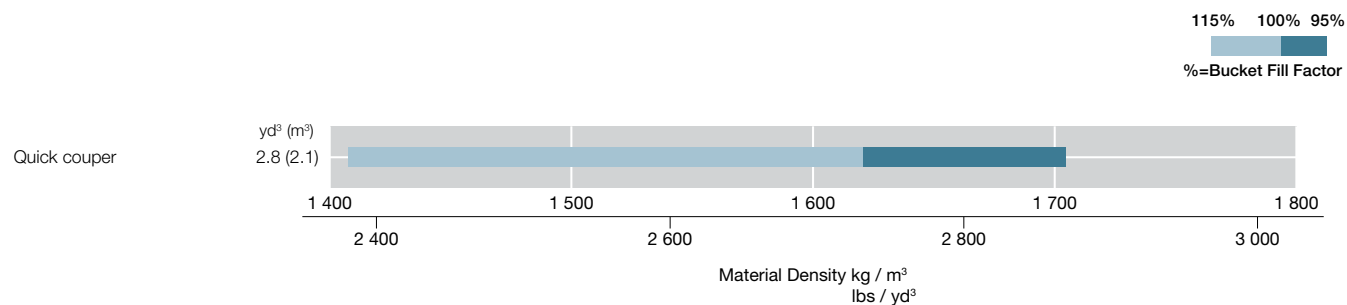
Attachment type		Fork	
R	Max. stacking height	ft-in (mm)	12' 4" (3,750)
S	Height of fork at maximum reach	ft-in (mm)	6' 0" (1,820)
T	Reach at ground level	ft-in (mm)	4' 1" (1,245)
U	Max. reach	ft-in (mm)	6' 2" (1,875)
V	Reach at max. stacking height	ft-in (mm)	3' 7" (1,080)
Static tipping load	Straight	lbf (kgf)	15,058 (6,830)
	Full 40° turn	lbf (kgf)	13,051 (5,920)
Max. payload per EN 474-3, 80 %		lb (kg)	10,450 (4,740)
Max. payload per EN 474-3, 60 %		lb (kg)	7,826 (3,550)
Fork tine length		ft-in (mm)	4' 0" (1,220)
Operating weight *		lb (kg)	28,903 (13,110)

* Static tipping load and operating weight marked with* include 20.5R25 (L3) tires (No ballast) with lubricants, full fuel tank and operator. Machine stability and operating weight depend on counterweight, tire size and other attachments.

WEIGHT CHANGE

Option item		Operating weight lb (kg)	Tipping load lb (kg)		Overall width in (mm) (outside tire)	Overall height in (mm)	Overall length in (mm)
			Straight	Full turn			
Tires	20.5R25 (L3) VJTZ	+22 (+10)	+22 (+10)	+22 (+10)	±0	-0.2 (-5)	+0.2 (+5)
Belly guard		+154 (+70)	+88 (+40)	+66 (+30)	±0	±0	±0

BUCKET SELECTION GUIDE



EQUIPMENT

ZW160-7 & ZW160PL-7

●: Standard equipment ○: Optional equipment -: Not applicable

ENGINE	ZW160-7	ZW160PL-7
Aftertreatment device	●	●
Aftertreatment manual regeneration inhibit switch	●	●
Aftertreatment manual regeneration switch	●	●
Air filter double elements	●	●
Air intake		
Pre-cleaner (sy-clone type)	●	●
Pre-cleaner (Turbo II)	○	○
Anti-clogging radiator (wide fin pitch)	●	●
Automatic reversible cooling fan with heat sensing	●	●
Cartridge-type engine oil filter	●	●
Cartridge-type fuel main filter	●	●
Cartridge-type fuel pre-filter (with water separator function)	●	●
Coolant reservoir sight gauge	●	●
DEF/AdBlue® tank with magnet adapter	●	●
Engine auto shut-down control system	●	●
Engine oil remote drain	●	●
Fan guard	●	●

BRAKE SYSTEM	ZW160-7	ZW160PL-7
Front and rear independent brake circuit	●	●
Inboard mounted fully hydraulic 4 wheel wet disc	●	●
Spring-applied/Hydraulic-released parking brake	●	●

HYDRAULIC SYSTEM	ZW160-7	ZW160PL-7
Bucket auto leveler (automatic return to dig control)	●	●
Control lever lock switch	●	●
Dual lift arm auto leveler and kickout system	●	●
Electric control lever for 3 spools control valve		
Multi-function lever and Proportional switch for 3rd function	●	●
Hydraulic filters	●	●
Lift arm float system	●	●
Quick coupler piping and switch	●	●
Reservoir sight gauge	●	●
Ride control system (OFF-AUTO type)	●	●
Work mode selector	●	●

CAB	ZW160-7	ZW160PL-7
Adjustable steering column with POP-UP	●	●
Auto control air conditioner		
Pre-cleaner for air conditioner	○	○
double intake filter	●	●
Bluetooth® integrated DAB+radio, hands-free calling	●	●
Camera and monitor		
AERIAL ANGLE (Side and rear view camera)	○	○
Rear view camera and monitor	●	●
Coat hook	●	●
Evacuation hammer	●	●
Front/rear defroster	●	●
Glove compartment	●	●
LED room light	●	●
Payload checker with tip-off function	●	-
Rear obstacle detection system	○	○
Rear view mirrors		
Inside (1)	●	●
Standard outside mirrors	●	●
Premium Outside (heated, 2) electrical adjustment with proximity	○	○
Retractable seat belt, 3.0 in (76 mm)	●	●
ROPS (ISO 3471: 2008), FOPS (ISO 3449: 2008 LEVEL II); multi-plane isolation mounted for noise , vibration reduction	●	●
Rubber floor mat	●	●
Seat		
Heavy duty air suspension seat equipped with horizontal suspension headrest and heater: fabric, high back, adjustable for damper, inclination of the seat, seat depth, weight-height, fore-aft position, reclining angle, armrest angle, headrest height and angle, lumbar support	●	●
Seat belt reminder	●	●
Steering system		
Wheel steering	●	●
Stereo Speakers (2)	●	●
Storage		
Cup holder	●	●
Document holder	●	●
Hot and cool box	●	●
Seatback pocket	●	●
Smartphone and Tablet device holder	●	●
Sunscreen roller type	●	●
Textured steering wheel with spinner knob	●	●
Tinted safety glass		
Front windshield: laminated	●	●
Others: tempered	●	●
USB power supply	●	●
Windshield washer front and rear	●	●
Windshield wipers front and rear	●	●
8" monitor	●	●

●: Standard equipment ○: Optional equipment -: Not applicable

MONITORING SYSTEM	ZW160-7	ZW160PL-7
Gauge: coolant temperature, fuel level, transmission oil temperature	●	●
Indicator lights: clearance lights, control lever lock, fuel level, high beam, parking brake, preheat, turn signals, work lights, fan reverse indicator, seat belt indicator	●	●
Indicator on multifunction monitor: F-N-R shift position, gear shift position, clock, DEF alarm indicator, DEF level gauge, ECO indicator, forward/reverse selector switch indicator, hold display, hour meter, odometer, battery volt, speedometer, tachometer, transmission auto-shifting indicator, Warning lights: air filter restriction, brake oil low pressure, communication system error, discharge warning, engine oil low pressure, engine warning, hydraulic oil level, low steering oil pressure, overheat, transmission warning	●	●
Indicator on sub monitor: payload checker (excluding PL), dual auto-leveler indicator rear obstacle detection and warning system (optional)	●	●
38 languages selection	●	●

ELECTRICAL SYSTEM	ZW160-7	ZW160PL-7
Alternator (95 A)	●	●
Backup alarm	●	●
Battery disconnect switch	●	●
Large capacity batteries	●	●
Power outlet 12 V and 24 V	●	●

LIGHTS	ZW160-7	ZW160PL-7
Clearance lights	●	●
LED brake and tail lights	●	●
LED headlights	●	●
Premium work light package (4 front, 2 rear on cab and 2 rear LED working lights)	●	●
Rotating lamp	○	○
Turn signals with hazard switch	●	●

TIRES	ZW160-7	ZW160PL-7
20.5R25 (L3) VJT	●	●

MISCELLANEOUS	ZW160-7	ZW160PL-7
Articulation lock bar	●	●
Belly guard (bolt on type) (front/rear)	○	○
Bucket cylinder guard	○	○
Cab top rail		
Front rail on the cab top	●	●
Rear rail on the cab top	●	●
Counterweight, built-in	●	●
Drawbar with locking pin	●	●
Emergency steering	○	○
Fenders		
20.5 R25 (front and full covered rear fenders with mud flaps)	○	○
20.5 R25 (front and half covered rear fenders)	●	●
Exclusive Global e-Service telematics	●	●
Lift and tie down hooks	●	●
Lift arm		
High lift arm	○	-
Parallel lift arm	-	●
Standard lift arm	●	-
On board information controller	●	●
Anti-Vandalism		
Battery cover with locking bracket	●	●
Lockable engine cover	●	●
Lockable fuel refilling cap	●	●
Quick coupler	○	○
Radiator dust protection screen	○	○
Standard tool kit	●	●

POWER TRAIN	ZW160-7	ZW160PL-7
Approach speed control	●	●
Deceleration select switch	●	●
Differential		
LSD (limited slip differential, front and rear)	●	●
Driving speed limiter 12.4 mph (20 km/h)	○	○
Electrically controlled HST system	●	●
Forward/reverse lever	●	●
Forward/reverse selector switch	●	●
Power mode switch	●	●
Traction control switch	●	●
1st speed limited switch	●	●

HITACHI

Reliable Solutions



REPUTATIONS ARE **BUILT ON IT.**

A legacy built on quality products and service: this is our story. For more than 50 years, Hitachi Construction Machinery Americas has been the regional partner of Hitachi Construction Machinery Group, headquartered in Japan.

Well-respected in North America since the 1970s when Hitachi Construction Machinery Group led a prominent joint venture, Hitachi Construction Machinery Americas recently established a new facility in Newnan, GA. that is poised to support local customers for years to come.

With input from construction professionals on every continent, our machinery is manufactured at state-of-the-art facilities in Japan and exported for sale across the world.

Your local Hitachi Construction Machinery Americas dealer has the resources, expertise, and personnel to work with you, ensuring the best return on investment. Utilizing carefully designed programs and services in conjunction with extensive digital resources, Hitachi Construction Machinery Americas provides a focused approach to supporting you, your business, and the durable construction machinery that your operation relies upon.

Machines in this brochure may be representative of global products not sold in the North American market, and used for illustrative purposes only. Options may not be available in all markets. Before operating this machine (incl. satellite communication system) outside of its original country of sale, it may be necessary to make modifications to comply with local regulatory, safety, and legal requirements. Please do not export or operate this machine outside the country of its intended use until such compliance has been confirmed. Contact your dealer for more assistance with regional compliance.

