



## ENGINE

Model	Isuzu AQ-6UZ1X Cooled EGR, SCR
Emissions Certification	Tier 4 Final
Fuel	Requires ultra-low sulfur fuel B5 biodiesel tolerant
Type	Water-cooled, 4-cycle, high pressure common rail system Turbocharger w/ air cooled intercooler, SCR system
Cylinders	6-cylinder in-line
Displacement	600 in <sup>3</sup> (9.8 L)
Bore/Stroke	4.72 x 5.71 in (120 x 145 mm)
Fuel injection	Direct injection – electronic
Fuel filter	Replaceable, full flow spin-on cartridge
Air filter	Dry type element w/ warning restriction indicator
Oil filter	Replaceable, full flow spin-on cartridge
Engine gradeability:	
Side-to-side	35°
Fore and aft	35°
Net horsepower – ISO 14396 @ 2000 RPM:	362 hp (270 kW)
Net horsepower – ISO 14396 @ 2000 RPM: w/ fan pump activated	329 hp (245 kW)
Net max. torque – ISO 14396 @ 1500 RPM:	1,005 lbf-ft (1 363 N-m)
Cooling operating range:	109° to -13° F (43° to -25° C)
Oil	Requires low-ash oil CJ-4

## DRIVETRAIN

Travel control	Dual stage relief/ counter balance design
Brakes	Mechanical disc
Service brakes	SAHR disc – each motor
Two speed travel:	
Max. high speed	3.3 mph (5.3 kph)
Max. low speed	2.0 mph (3.2 kph)
Automatic downshift	
Drawbar pull	76,200 lbf (339 kN)
Gradeability	70% – 35° Slope

## ELECTRICAL

Voltage	24 Volts
Alternator rating	50 amp
Batteries	2 x 12 Volt
Battery reserve capacity	128 Ah/5 hour
Work lights – 5	24 Volt/70 watt
2 boom, 1 upper, 2 cab	

## OPERATOR ENVIRONMENT

Air-conditioner output	18,100 BTU/hr
Heater output	20,150 BTU/hr
Sound level inside cab – ISO6395	71.0 dBA
Electrical outlet	12 Volt
Cab interior light	10 watt
Rear view camera	Standard
Seat	Heated, air-suspension

## ATTACHMENT

Boom	22 ft 11 in (6 980 mm)
Arm options	11 ft 1 in (3 380 mm) 8 ft 4 in (2 530 mm) 13 ft 1 in (4 000 mm) 15 ft 11 in (4 850 mm)
Bucket digging force*	55,500 lbf (247 kN)
w/ Auto Power-Boost	60,700 lbf (270 kN)

NOTE: \*Digging force ratings based on ISO6015.

## OPERATING WEIGHT

Operating weight	109,300 lb (49 600 kg)
w/ shoes	2 ft 11 in (900 mm)
w/ boom	22 ft 11 in (6 980 mm)
w/ arm	11 ft 1 in (3 380 mm)
w/ bucket	33,731 lb (1 530 kg)
w/ counterweight	22,000 lb (10 000 kg)

NOTE: W/ operator/full fuel/standard equipment/  
fixed sideframe undercarriage

## GROUND PRESSURE

@ Standard operating weight 8.3 psi (0.57 bar)  
w/ 35.4 in (900 mm) triple semi-grouser shoes

## HYDRAULICS

System design	Open center
Main pumps	Two-variable displacement/ axial piston
Max. rated flow per pump:	96.2 gpm (364 L/min)
Max rated flow total:	192.3 gpm (728 L/min)
System pressures:	
Boom, arm and bucket	4,550 psi (314 bar)
w/ Power Boost	4,980 psi (343 bar)
Travel circuits	4,980 psi (343 bar)
Swing circuits	4,270 psi (294 bar)
Pilot pump	1 x gear design
Max. capacity	7.9 gpm (30.0 L/min)

Controls	w/ boom/arm holding valve
Right track travel, bucket, boom and arm acceleration.	1 x Four-spool section
Left track travel, auxiliary, swing, boom and arm acceleration.	1 x Five-spool section

Work mode selections	SP: Speed Priority H: Heavy-Duty A: Automatic
----------------------	---

Swing motor	Fixed displacement axial piston
Swing final drive	Planetary gear reduction
Travel motor	Two-speed independent travel/axial piston

## HYDRAULIC CYLINDERS

Boom cylinders	Two (2)
Cylinder bore	6.7 in (170 mm)
Cylinder rod diameter	4.5 in (115 mm)
Cylinder stroke	61.0 in (1 550 mm)
Arm cylinder	One (1)
Cylinder bore	7.5 in (190 mm)
Cylinder rod diameter	5.1 in (130 mm)
Cylinder stroke	75.6 in (1 920 mm)
Bucket cylinder	One (1)
Cylinder bore	6.5 in (165 mm)
Cylinder rod diameter	4.5 in (115 mm)
Cylinder stroke	50.6 in (1 285 mm)

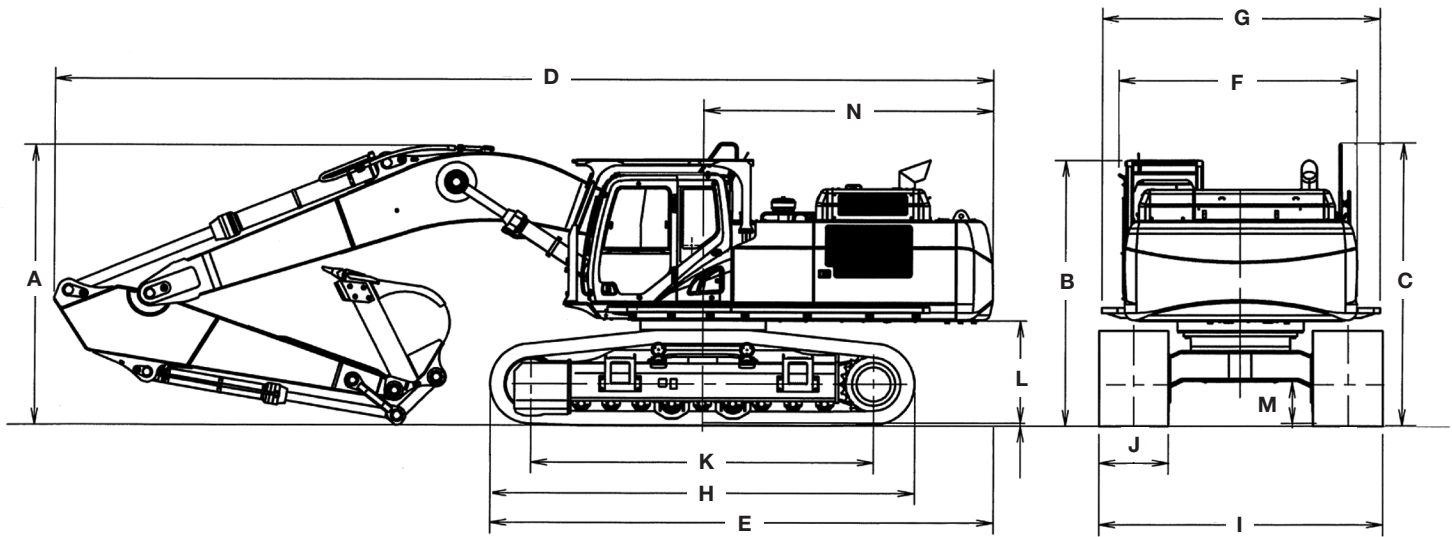
## SERVICE CAPACITIES

Fuel tank	172 gal (650 L)
Hydraulic system	122 gal (460 L)
Hydraulic tank	61 gal (230 L)
Engine oil w/ filter	10.8 gal (41.0 L)
Swing drive	2.8 gal (10.5 L)
Final drive – each side	4.0 gal (15 L)
Cooling system	14.6 gal (55.1 L)
DEF tank	40 gal (152 L)

## OTHER SPECIFICATIONS

Swing speed	0 – 9.1 RPM
Swing torque	111,000 lbf-ft (150 000 N-m)
Swing brake	Mechanical disc
Undercarriage:	
Length	17 ft 11 in (5 450 mm)
Track gauge	9 ft 0 in (2 750 mm)
Carrier rollers – each side	2
Track rollers – each side	9
Shoes – Triple grouser – each side	50
Shoe width – std.	2 ft 11 in (900 mm)
Link pitch	9 in (229 mm)

Track:	
Chain	Grease lubricated/strutted
Guides	Single
Adjustment	Hydraulic



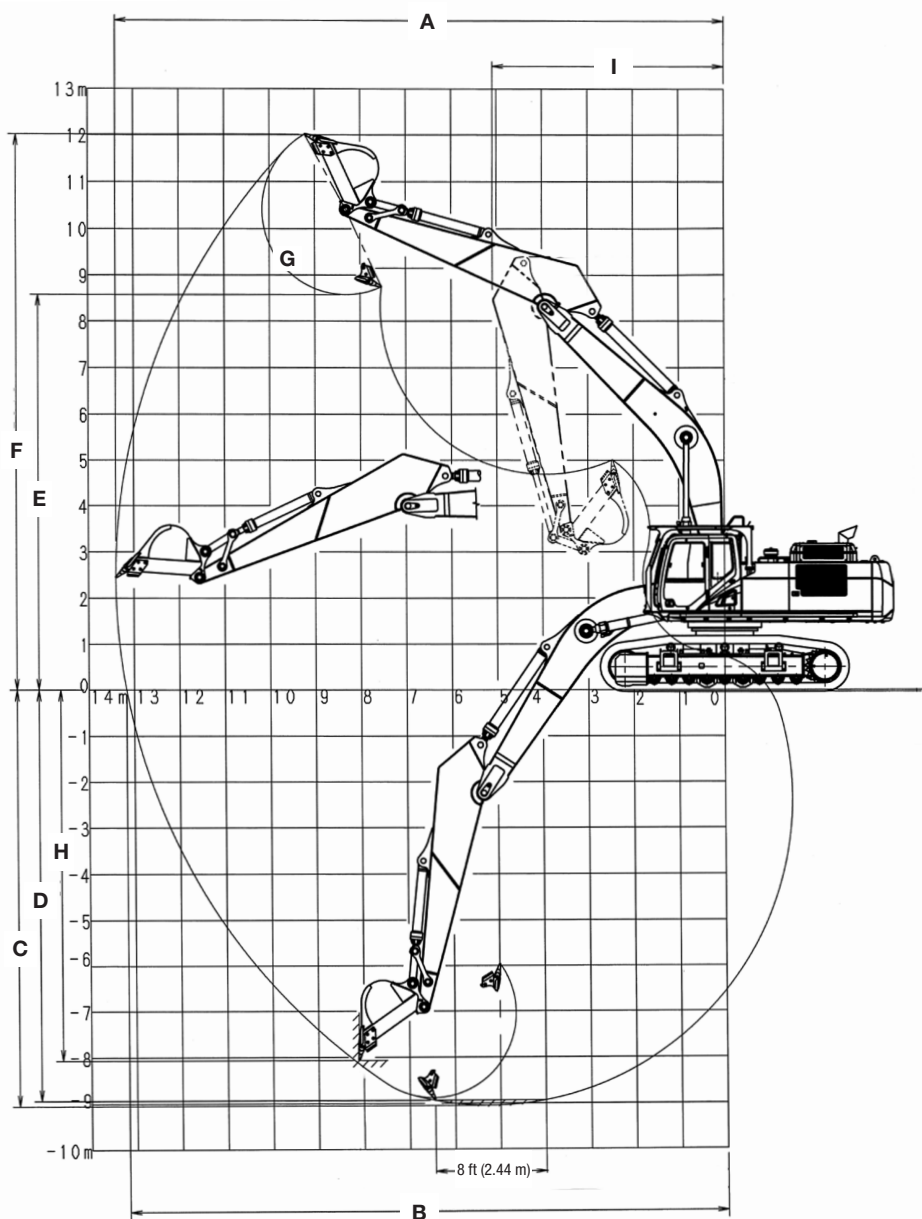
Line drawings are for illustrative purpose only and may not be exact representation of unit.

### DIMENSIONS – LC

	11 ft 1 in (3.38 m) Arm	8 ft 4 in (2.53 m) Arm	13 ft 1 in (4.00 m) Arm	15 ft 11 in (4.85 m) Arm
A. Overall height – with attachment	12 ft 0 in (3 650 mm)	12 ft 0 in (3 670 mm)	11 ft 11 in (3 630 mm)	14 ft 6 in (4 420 mm)
B. Cab height	10 ft 11 in (3 320 mm)	10 ft 11 in (3 320 mm)	10 ft 11 in (3 320 mm)	10 ft 11 in (3 320 mm)
C. Overall height – top of guardrail	12 ft 0 in (3 650 mm)	12 ft 0 in (3 650 mm)	12 ft 0 in (3 650 mm)	12 ft 0 in (3 650 mm)
D. Overall length – with attachment	39 ft 8 in (12 090 mm)	39 ft 9 in (12 110 mm)	39 ft 7 in (12 070 mm)	39 ft 11 in (12 180 mm)
E. Overall length – without attachment	21 ft 2 in (6 450 mm)	21 ft 2 in (6 450 mm)	21 ft 2 in (6 450 mm)	21 ft 2 in (6 450 mm)
F. Width of upperstructure – without catwalks	10 ft 0 in (3 060 mm)	10 ft 0 in (3 060 mm)	10 ft 0 in (3 060 mm)	10 ft 0 in (3 060 mm)
G. Width of upperstructure – with catwalks	11 ft 9 in (3 590 mm)	11 ft 9 in (3 590 mm)	11 ft 9 in (3 590 mm)	11 ft 9 in (3 590 mm)
H. Track overall length	17 ft 11 in (5 450 mm)	17 ft 11 in (5 450 mm)	17 ft 11 in (5 450 mm)	17 ft 11 in (5 450 mm)
I. Track overall width with 35.4 in (900 mm) shoes	12 ft 0 in (3 650 mm)	12 ft 0 in (3 650 mm)	12 ft 0 in (3 650 mm)	12 ft 0 in (3 650 mm)
J. Track shoe width	2 ft 11 in (900 mm)	2 ft 11 in (900 mm)	2 ft 11 in (900 mm)	2 ft 11 in (900 mm)
K. Center to center – idler to sprocket	14 ft 5 in (4 400 mm)	14 ft 5 in (4 400 mm)	14 ft 5 in (4 400 mm)	14 ft 5 in (4 400 mm)
L. Upperstructure ground clearance	4 ft 4 in (1 330 mm)	4 ft 4 in (1 330 mm)	4 ft 4 in (1 330 mm)	4 ft 4 in (1 330 mm)
M. Minimum ground clearance	1 ft 9 in (535 mm)	1 ft 9 in (535 mm)	1 ft 9 in (535 mm)	1 ft 9 in (535 mm)
N. Rear tail swing radius	12 ft 3 in (3 730 mm)	12 ft 3 in (3 730 mm)	12 ft 3 in (3 730 mm)	12 ft 3 in (3 730 mm)

### DIMENSIONS – RETRACTABLE UNDERCARRIAGE

	11 ft 1 in (3.38 m) Arm	8 ft 4 in (2.53 m) Arm	13 ft 1 in (4.00 m) Arm	15 ft 11 in (4.85 m) Arm
A. Overall height – with attachment	12 ft 1 in (3 680 mm)	12 ft 2 in (3 720 mm)	12 ft 1 in (3 630 mm)	14 ft 5 in (4 390 mm)
B. Cab height	11 ft 5 in (3 470 mm)	11 ft 5 in (3 470 mm)	11 ft 5 in (3 470 mm)	11 ft 5 in (3 470 mm)
C. Overall height – top of guardrail	12 ft 6 in (3 800 mm)	12 ft 6 in (3 800 mm)	12 ft 6 in (3 800 mm)	12 ft 6 in (3 800 mm)
D. Overall length – with attachment	39 ft 7 in (12 060 mm)	39 ft 8 in (12 090 mm)	39 ft 5 in (12 020 mm)	40 ft 2 in (12 240 mm)
E. Overall length – without attachment	21 ft 2 in (6 450 mm)	21 ft 2 in (6 450 mm)	21 ft 2 in (6 450 mm)	21 ft 2 in (6 450 mm)
F. Width of upperstructure – without catwalks	10 ft 0 in (3 060 mm)	10 ft 0 in (3 060 mm)	10 ft 0 in (3 060 mm)	10 ft 0 in (3 060 mm)
G. Width of upperstructure – with catwalks	11 ft 9 in (3 590 mm)	11 ft 9 in (3 590 mm)	11 ft 9 in (3 590 mm)	11 ft 9 in (3 590 mm)
H. Track overall length	17 ft 11 in (5 450 mm)	17 ft 11 in (5 450 mm)	17 ft 11 in (5 450 mm)	17 ft 11 in (5 450 mm)
I. Track overall width with 35.4 in (900 mm) shoes:				
Extended	12 ft 5 in (3 790 mm)	12 ft 5 in (3 790 mm)	12 ft 5 in (3 790 mm)	12 ft 5 in (3 790 mm)
Retracted	10 ft 10 in (3 290 mm)	10 ft 10 in (3 290 mm)	10 ft 10 in (3 290 mm)	10 ft 10 in (3 290 mm)
J. Track shoe width	2 ft 11 in (900 mm)	2 ft 11 in (900 mm)	2 ft 11 in (900 mm)	2 ft 11 in (900 mm)
K. Center to center – idler to sprocket	14 ft 5 in (4 400 mm)	14 ft 5 in (4 400 mm)	14 ft 5 in (4 400 mm)	14 ft 5 in (4 400 mm)
L. Upperstructure ground clearance	4 ft 10 in (1 480 mm)	4 ft 10 in (1 480 mm)	4 ft 10 in (1 480 mm)	4 ft 10 in (1 480 mm)
M. Minimum ground clearance	2 ft 4 in (720 mm)	2 ft 4 in (720 mm)	2 ft 4 in (720 mm)	2 ft 4 in (720 mm)
N. Rear tail swing radius	12 ft 3 in (3 730 mm)	12 ft 3 in (3 730 mm)	12 ft 3 in (3 730 mm)	12 ft 3 in (3 730 mm)



### PERFORMANCE SPECS

	11 ft 1 in (3.38 m) Arm	8 ft 4 in (2.53 m) Arm	13 ft 1 in (4.00 m) Arm	15 ft 11 in (4.85 m) Arm
<b>A.</b> Maximum dig radius	39 ft 3 in (11 970 mm)	36 ft 10 in (11 220 mm)	41 ft 1 in (12 520 mm)	43 ft 6 in (13 270 mm)
<b>B.</b> Dig radius at groundline	38 ft 7 in (11 750 mm)	36 ft 0 in (10 980 mm)	40 ft 4 in (12 300 mm)	42 ft 10 in (13 060 mm)
<b>C.</b> Maximum dig depth	25 ft 4 in (7 720 mm)	22 ft 6 in (6 870 mm)	27 ft 4 in (8 340 mm)	30 ft 2 in (9 200 mm)
<b>D.</b> Dig depth - 8 ft 0 in (2.44 m) level bottom	24 ft 10 in (7 580 mm)	21 ft 11 in (6 690 mm)	26 ft 11 in (8 210 mm)	29 ft 9 in (9 080 mm)
<b>E.</b> Dump height	25 ft 3 in (7 690 mm)	24 ft 4 in (7 410 mm)	25 ft 10 in (7 870 mm)	26 ft 6 in (8 070 mm)
<b>F.</b> Maximum reach height	36 ft 5 in (11 100 mm)	35 ft 7 in (10 850 mm)	36 ft 11 in (11 260 mm)	37 ft 7 in (11 460 mm)
<b>G.</b> Bucket rotation	176°	176°	176°	176°
<b>H.</b> Maximum vertical wall dig depth	21 ft 9 in (6 640 mm)	19 ft 8 in (5 990 mm)	23 ft 4 in (7 120 mm)	26 ft 1 in (7 960 mm)
<b>I.</b> Minimum swing radius	16 ft 4 in (4 970 mm)	16 ft 2 in (4 930 mm)	16 ft 1 in (4 910 mm)	16 ft 8 in (5 090 mm)
Arm digging force:				
Standard	45,200 lb (201 kN)	55,300 lb (246 kN)	39,800 lb (177 kN)	35,500 lb (158 kN)
Power Boost	49,500 lb (220 kN)	60,500 lb (269 kN)	43,400 lb (193 kN)	38,900 lb (173 kN)
Bucket digging force:				
Standard	55,500 lb (247 kN)	55,500 lb (247 kN)	55,500 lb (247 kN)	55,500 lb (247 kN)
Power Boost	60,700 lb (270 kN)	60,700 lb (270 kN)	60,700 lb (270 kN)	60,700 lb (270 kN)





**LIFT CAPACITIES**

**CX490D Long – 22 ft 11 in (6.98 m) Boom and 13 ft 1 in (4.00 m) Arm, ISO capacities, includes bucket weighing 3,000 lb (1 370 kg).**

Load (Lift Point Height)	5 ft (1.5 m)		10 ft (3 m)		15 ft (4.5 m)		20 ft (6 m)		25 ft (7.5 m)		30 ft (9 m)		35 ft (10.5 m)		40 ft (12.0 m)		MAXIMUM REACH			
	END	SIDE	END	SIDE	END	SIDE	END	SIDE	END	SIDE	END	SIDE	END	SIDE	END	SIDE	@	END	SIDE	
+30 ft (9 m)												13,955 lb* (6 330 kg)*	13,955 lb* (6 330 kg)*					32 ft 8 in (10.05 m)	10,274 lb* (4 660 kg)*	10,274 lb* (4 660 kg)*
+25 ft (7.5 m)												17,439 lb* (7 910 kg)*	17,439 lb* (7 910 kg)*	13,757 lb* (6 240 kg)*	13,757 lb* (6 240 kg)*			35 ft 9 in (10.96 m)	9,921 lb* (4 500 kg)*	9,921 lb* (4 500 kg)*
+20 ft (6 m)												18,938 lb* (8 590 kg)*	18,078 lb* (8 200 kg)*	16,976 lb* (7 700 kg)*	13,691 lb* (6 210 kg)*			37 ft 10 in (11.56 m)	9,899 lb* (4 490 kg)*	9,899 lb* (4 490 kg)*
+15 ft (4.5 m)							25,265 lb* (11 460 kg)*	25,265 lb* (11 460 kg)*	23,104 lb* (10 480 kg)*	23,104 lb* (10 480 kg)*	20,128 lb* (9 130 kg)*	17,505 lb* (7 940 kg)*	18,012 lb* (8 170 kg)*	13,272 lb* (6 020 kg)*			39 ft 1 in (11.91 m)	10,097 lb* (4 580 kg)*	10,097 lb* (4 580 kg)*	
+10 ft (3 m)			34,590 lb* (15 690 kg)*	34,590 lb* (15 690 kg)*	45,680 lb* (20 720 kg)*	45,680 lb* (20 720 kg)*	32,937 lb* (14 940 kg)*	31,614 lb* (14 340 kg)*	26,147 lb* (11 860 kg)*	22,465 lb* (10 190 kg)*	22,046 lb* (10 000 kg)*	16,711 lb* (7 580 kg)*	19,136 lb* (8 680 kg)*	12,787 lb* (5 800 kg)*	11,244 lb* (5 100 kg)*	9,943 lb* (4 510 kg)*	39 ft 6 in (12.05 m)	10,494 lb* (4 760 kg)*	9,833 lb* (4 460 kg)*	
+5 ft (1.5 m)			16,843 lb* (7 640 kg)*	16,843 lb* (7 640 kg)*	50,508 lb* (22 910 kg)*	46,077 lb* (20 900 kg)*	37,104 lb* (16 830 kg)*	29,829 lb* (13 530 kg)*	28,704 lb* (13 020 kg)*	28,704 lb* (13 020 kg)*	23,567 lb* (10 690 kg)*	15,939 lb* (7 230 kg)*	19,996 lb* (9 070 kg)*	12,324 lb* (5 590 kg)*			39 ft 4 in (11.91 m)	11,177 lb* (5 070 kg)*	9,744 lb* (4 420 kg)*	
Groundline			23,193 lb* (10 520 kg)*	23,193 lb* (10 520 kg)*	53,175 lb* (24 120 kg)*	43,696 lb* (19 820 kg)*	39,198 lb* (17 780 kg)*	28,307 lb* (12 840 kg)*	30,203 lb* (13 700 kg)*	20,283 lb* (9 200 kg)*	24,427 lb* (11 080 kg)*	15,344 lb* (6 960 kg)*	20,305 lb* (9 210 kg)*	11,971 lb* (5 430 kg)*			38 ft 5 in (11.7 m)	12,236 lb* (5 550 kg)*	9,987 lb* (4 530 kg)*	
-5 ft (-1.5 m)	22,134 lb* (10 040 kg)*	22,134 lb* (10 040 kg)*	31,416 lb* (14 250 kg)*	31,416 lb* (14 250 kg)*	53,727 lb* (24 370 kg)*	43,166 lb* (19 580 kg)*	39,220 lb* (17 790 kg)*	27,558 lb* (12 500 kg)*	30,358 lb* (13 770 kg)*	19,731 lb* (8 950 kg)*	24,405 lb* (11 070 kg)*	14,991 lb* (6 800 kg)*	19,930 lb* (9 040 kg)*	11,817 lb* (5 360 kg)*			36 ft 9 in (11.21 m)	13,801 lb* (6 260 kg)*	10,692 lb* (4 850 kg)*	
-10 ft (-3 m)	32,298 lb* (14 650 kg)*	32,298 lb* (14 650 kg)*	41,447 lb* (18 800 kg)*	41,447 lb* (18 800 kg)*	51,346 lb* (23 290 kg)*	43,475 lb* (19 720 kg)*	38,096 lb* (17 280 kg)*	27,580 lb* (12 510 kg)*	29,542 lb* (13 400 kg)*	19,709 lb* (8 940 kg)*	23,413 lb* (10 620 kg)*	15,013 lb* (6 810 kg)*					34 ft 3 in (10.46 m)	16,314 lb* (7 400 kg)*	11,971 lb* (5 430 kg)*	
-15 ft (-4.5 m)	41,910 lb* (19 010 kg)*	41,910 lb* (19 010 kg)*	56,019 lb* (25 410 kg)*	56,019 lb* (25 410 kg)*	46,032 lb* (20 880 kg)*	43,696 lb* (19 820 kg)*	34,767 lb* (15 770 kg)*	28,065 lb* (12 730 kg)*	26,852 lb* (12 180 kg)*	20,106 lb* (9 120 kg)*	20,150 lb* (9 140 kg)*	15,543 lb* (7 050 kg)*					30 ft 9 in (9.42 m)	17,571 lb* (7 970 kg)*	14,286 lb* (6 480 kg)*	
-20 ft (-6 m)			50,023 lb* (22 690 kg)*	50,023 lb* (22 690 kg)*	37,016 lb* (16 790 kg)*	37,016 lb* (16 790 kg)*	28,087 lb* (12 740 kg)*	28,021 lb* (12 710 kg)*	20,371 lb* (9 240 kg)*	20,216 lb* (9 170 kg)*							25 ft 10 in (7.98 m)	16,645 lb* (7 550 kg)*	16,645 lb* (7 550 kg)*	

**CX490D RTC Long – 22 ft 11 in (6.98 m) Boom and 13 ft 1 in (4.00 m) Arm, ISO capacities, includes bucket weighing 3,000 lb (1 370 kg).**

Load (Lift Point Height)	5 ft (1.5 m)		10 ft (3 m)		15 ft (4.5 m)		20 ft (6 m)		25 ft (7.5 m)		30 ft (9 m)		35 ft (10.5 m)		40 ft (12.0 m)		MAXIMUM REACH			
	END	SIDE	END	SIDE	END	SIDE	END	SIDE	END	SIDE	END	SIDE	END	SIDE	END	SIDE	@	END	SIDE	
+30 ft (9 m)												13,955 lb* (6 330 kg)*	13,955 lb* (6 330 kg)*					32 ft 8 in (10.05 m)	10,274 lb* (4 660 kg)*	10,274 lb* (4 660 kg)*
+25 ft (7.5 m)												17,439 lb* (7 910 kg)*	17,439 lb* (7 910 kg)*	13,757 lb* (6 240 kg)*	13,757 lb* (6 240 kg)*			35 ft 9 in (10.96 m)	9,921 lb* (4 500 kg)*	9,921 lb* (4 500 kg)*
+20 ft (6 m)												18,938 lb* (8 590 kg)*	18,938 lb* (8 590 kg)*	16,976 lb* (7 700 kg)*	14,793 lb* (6 710 kg)*			37 ft 10 in (11.56 m)	9,899 lb* (4 490 kg)*	9,899 lb* (4 490 kg)*
+15 ft (4.5 m)							25,265 lb* (11 460 kg)*	25,265 lb* (11 460 kg)*	23,104 lb* (10 480 kg)*	23,104 lb* (10 480 kg)*	20,128 lb* (9 130 kg)*	18,872 lb* (8 560 kg)*	18,012 lb* (8 170 kg)*	14,374 lb* (6 520 kg)*			39 ft 1 in (11.91 m)	10,097 lb* (4 580 kg)*	10,097 lb* (4 580 kg)*	
+10 ft (3 m)			34,590 lb* (15 690 kg)*	34,590 lb* (15 690 kg)*	45,680 lb* (20 720 kg)*	45,680 lb* (20 720 kg)*	32,937 lb* (14 940 kg)*	32,937 lb* (14 940 kg)*	26,147 lb* (11 860 kg)*	24,251 lb* (11 000 kg)*	22,046 lb* (10 000 kg)*	18,078 lb* (8 200 kg)*	19,136 lb* (8 680 kg)*	13,911 lb* (6 310 kg)*	11,244 lb* (5 100 kg)*	10,869 lb* (4 930 kg)*	39 ft 6 in (12.05 m)	10,494 lb* (4 760 kg)*	10,494 lb* (4 760 kg)*	
+5 ft (1.5 m)			16,843 lb* (7 640 kg)*	16,843 lb* (7 640 kg)*	50,508 lb* (22 910 kg)*	50,111 lb* (22 730 kg)*	37,104 lb* (16 830 kg)*	32,320 lb* (14 660 kg)*	28,704 lb* (13 020 kg)*	23,016 lb* (10 440 kg)*	23,567 lb* (10 690 kg)*	17,306 lb* (7 850 kg)*	19,996 lb* (9 070 kg)*	13,448 lb* (6 100 kg)*			39 ft 4 in (11.98 m)	11,177 lb* (5 070 kg)*	10,670 lb* (4 840 kg)*	
Groundline			23,193 lb* (10 520 kg)*	23,193 lb* (10 520 kg)*	53,175 lb* (24 120 kg)*	47,708 lb* (21 640 kg)*	39,198 lb* (17 780 kg)*	30,776 lb* (13 960 kg)*	30,203 lb* (13 700 kg)*	22,046 lb* (10 000 kg)*	24,427 lb* (11 080 kg)*	16,689 lb* (7 570 kg)*	20,305 lb* (9 210 kg)*	13,073 lb* (5 930 kg)*			38 ft 5 in (11.7 m)	12,236 lb* (5 550 kg)*	10,957 lb* (4 970 kg)*	
-5 ft (-1.5 m)	22,134 lb* (10 040 kg)*	22,134 lb* (10 040 kg)*	31,416 lb* (14 250 kg)*	31,416 lb* (14 250 kg)*	53,727 lb* (24 370 kg)*	46,936 lb* (21 290 kg)*	39,220 lb* (17 790 kg)*	30,005 lb* (13 610 kg)*	30,358 lb* (13 770 kg)*	21,473 lb* (9 740 kg)*	24,405 lb* (11 070 kg)*	16,336 lb* (7 410 kg)*	19,930 lb* (9 040 kg)*	12,919 lb* (5 860 kg)*			36 ft 9 in (11.21 m)	13,801 lb* (6 260 kg)*	11,707 lb* (5 310 kg)*	
-10 ft (-3 m)	32,298 lb* (14 650 kg)*	32,298 lb* (14 650 kg)*	41,447 lb* (18 800 kg)*	41,447 lb* (18 800 kg)*	51,346 lb* (23 290 kg)*	47,510 lb* (21 550 kg)*	38,096 lb* (17 280 kg)*	30,027 lb* (13 620 kg)*	29,542 lb* (13 400 kg)*	21,451 lb* (9 730 kg)*	23,413 lb* (10 620 kg)*	16,380 lb* (7 430 kg)*					34 ft 3 in (10.46 m)	16,314 lb* (7 400 kg)*	13,095 lb* (5 940 kg)*	
-15 ft (-4.5 m)	41,910 lb* (19 010 kg)*	41,910 lb* (19 010 kg)*	56,019 lb* (25 410 kg)*	56,019 lb* (25 410 kg)*	46,032 lb* (20 880 kg)*	46,032 lb* (20 880 kg)*	34,767 lb* (15 770 kg)*	30,512 lb* (13 840 kg)*	26,852 lb* (12 180 kg)*	21,848 lb* (9 910 kg)*	20,150 lb* (9 140 kg)*	16,865 lb* (7 650 kg)*					30 ft 9 in (9.42 m)	17,571 lb* (7 970 kg)*	15,565 lb* (7 060 kg)*	
-20 ft (-6 m)			50,023 lb* (22 690 kg)*	50,023 lb* (22 690 kg)*	37,016 lb* (16 790 kg)*	37,016 lb* (16 790 kg)*	28,087 lb* (12 740 kg)*	28,087 lb* (12 740 kg)*	20,371 lb* (9 240 kg)*	20,371 lb* (9 240 kg)*							25 ft 10 in (7.98 m)	16,645 lb* (7 550 kg)*	16,645 lb* (7 550 kg)*	

NOTE: \*Following number indicates hydraulic capacity

## STANDARD EQUIPMENT

### ENGINE

Isuzu AQ-6UZ1X  
Tier 4 Final Certified  
Selective Catalytic Reduction – SCR  
Diesel Oxidation Catalyst – DOC  
Cooled Exhaust Gas Recirculation – CEGR  
EGR Coolers  
Six-cylinder turbo-charged diesel  
VGT turbocharger  
Electronic fuel injection  
High pressure common rail system  
Neutral safety start  
Auto-engine warm up  
Glow-plug pre-heat  
Fuel Economy Assist System – FEA  
Engine Protection Feature – EPF  
Dual-stage fuel filtration  
Dual element air filter  
Remote oil filter  
Drain for fuel tank  
Remote engine oil drain  
500-hour engine oil change interval  
24 Volt system  
Engine oil sample port  
Battery disconnect switch  
Air pre-cleaner – Cyclone  
High ambient temperature cooling package  
Emergency engine stop  
External Fuel and DEF gauges  
Fan housing  
Fuel cooler  
Fuel filter restriction indicator  
Fuel shut-off valve  
Idle start  
Radiator, oil cooler, intercooler – protective screen

### FUEL ECONOMY SYSTEMS

Engine Idle/Fuel Economy System:  
Auto-idle  
One-touch idle  
Auto-idle shut-down  
BEC – Boom Economy Control  
AEC – Auto Economy Control  
SWC – Swing Relief Control  
SSC – Spool Stroke Control

### HYDRAULICS

Auto power boost  
Auto swing priority  
Arm speed assistance – 2 pump flow  
Auxiliary flow control  
Auxiliary valve  
Boom speed assistance – 2 pump flow  
Bucket curl assist  
Control levers pre-wired for auxiliary hydraulics  
Electronically controlled hydraulic pumps  
Holding valve – Boom and Arm  
Fire wall  
Hydraulic filter restriction indicator  
Neutral pump de-stroke  
Oil cooler

Power save  
Pump stand-by pressure  
Auto travel speed change  
Selectable work modes  
Free swing  
Hydraulic oil sample port  
Control pattern selector  
Pre-set auxiliary pump settings  
Auxiliary valve  
5,000-hour hydraulic oil change interval  
1,000-hour hydraulic filter change interval  
SAHR brake

### UPPER STRUCTURE

ISO mirrors – 3  
Viscous Cab mounts – fluid and spring  
Upper mounted work light – 70 watt  
Swivel guard belly pan  
Center cover – over main CV  
Fuel tank belly pan  
Handrail – RH access  
ISO guard rails  
Lifting eyes for counterweight  
Lockable fuel cap, service doors and toolbox

### ATTACHMENTS

Boom – 22 ft 11 in (6.98 m)  
Arm – 11 ft 1 in (3.38 m)  
Heavy-duty bucket linkage  
Boom mounted work light – 70 watt  
Auxiliary pipe brackets  
Centralized grease fittings  
Attachment cushion valve  
Arm and boom regeneration  
Bucket anti-clatter device  
Chrome pins  
Easy Maintenance System (EMS) bushings  
Teardrop pin retention keepers

### OPERATOR ENVIRONMENT

ROPS protection  
FOPS cab top guard – Level 1  
Pressurized cab  
Face vent  
Cab lights – 2  
Interior dome light  
One-touch lock front window  
One piece window – right  
Safety glass windows  
Gate lock hydraulic activation  
Emergency exit and hammer  
Clear polycarbonate roof window with sunshade  
AC/heat/defrost with auto climate control  
LED Color monitor – 7 in (180 mm)  
26 selectable languages for monitor  
On-board diagnostic system  
10 programmable attachments settings on monitor – 5 single flow, 5 dual flow  
Seat belt – 3 in (76 mm)  
Heated high-back cloth seat with air suspension and 65° tilt adjustment  
Sliding seat – 3.54 in (90 mm)

Adjustable armrests  
Tilting consoles – 4-position  
Sliding cockpit – 3.15 in (80 mm)  
Low-effort joystick controls  
Controls pre-wired for auxiliary  
Single pedal travel  
Straight travel  
AM/FM radio with antenna, 2 speakers and Bluetooth capabilities  
Aux-in port for personal electronics  
Radio mute switch – joystick  
Rear-view camera  
Anti-theft system – start code system  
Rubber floormat  
12 Volt electric outlet  
24 Volt cigarette lighter  
Windshield wiper/washer  
Cup holder  
Storage compartments  
Warm/cool storage compartment  
Travel alarm with cancel switch  
Ignition keys  
One key start & lock-up  
Cab filter – external  
Cab handrails  
Operator's manual

### UNDERCARRIAGE

Long undercarriage  
35.4 in (900 mm) steel shoes, triple semi-grouser  
Full overlap turntable bearing tub  
Double track chain guides  
Hydraulic track adjustment  
Sealed link chain  
Steps  
Carbody belly pan – swivel guard  
X-pattern carbody  
Lashing points – tie downs  
Extra Filter Kit:  
Engine oil filter  
Filter wrench  
Fuel filters  
Green plug oil drain hose for engine oil drain  
Hydraulic return filter  
Pilot circuit hydraulic filter

### TELEMATICS

CASE SiteWatch™ Telematics – includes hardware and a 3-yr Advanced data subscription

## OPTIONAL EQUIPMENT

### ENGINE

Refueling pump

### HYDRAULICS

Auxiliary hydraulics:

Single acting/joystick activated

Double acting/joystick activated – thumb

Multi-function with electronic pressure control/joystick activated with electronic proportional controls

Secondary low-flow/joystick activated

Proportional hydraulic controls

Hose Burst Check Valve – HBCV

Hydraulic CWT Removal Device

### ATTACHMENTS

Heavy-duty arm – 8 ft 3 in (2.53 m)

Arm – 13 ft 2 in (4.00 m)

Arm – 15 ft 11 in (4.85 m)

Tools:

Heavy-duty/Extreme-duty/Ditching

Buckets; Hammers; Thumbs;

Compaction plates.

Load holding control

### UPPER STRUCTURE

Rubber bumper guard – order through

Service Parts

Catwalk – left and right side

### UNDERCARRIAGE

29.5 in (750 mm) steel shoes,  
triple semi-grouser

Full Length Track Chain Guards

### OPERATOR ENVIRONMENT

FOPS cab top guard – Level 2

Front grill guard – 2 x 2 in (50.8 x 50.8 mm)  
screen mesh

Front rock guard – vertical bars

Two piece/OPG 1

Front rock guard – vertical bars

One piece/OPG 2

Vandal guard (front window) with

common key

Rain deflector – not available with

Front guards

Sun visor

Side-view camera

LED Package:

Includes 1 Side view camera and 6 LED

Lights – 2 front cab mounted, 2 rear

mounted and 1 mounted on each side

**CaseCE.com**

©2018 CNH Industrial America LLC. All rights reserved. CASE is a trademark registered in the United States and many other countries, owned by or licensed to CNH Industrial N.V., its subsidiaries or affiliates. CNH Industrial Capital is a trademark in the United States and many other countries, owned by or licensed to CNH Industrial N.V., its subsidiaries or affiliates. Printed in U.S.A. Contains 10% post-consumer fiber.

IMPORTANT: CASE Construction Equipment Inc. reserves the right to change these specifications without notice and without incurring any obligation relating to such change. Availability of some models and equipment builds vary according to the country in which the equipment is used. The illustrations and text may include optional equipment and accessories and may not include all standard equipment. Your CASE dealer/distributor will be able to give you details of the products and their specifications available in your area.



CASE Construction Equipment is biodiesel-friendly. NOTE: All engines meet current EPA emissions regulations. All specifications are stated in accordance with SAE Standards or Recommended Practices, where applicable.



Always read the Operator's Manual before operating any equipment. Inspect equipment before using it, and be sure it is operating properly. Follow the product safety signs and use any safety features provided.

Form No. CCE201807CX490D

Replaces Form No. CCE201511CX490D

**CX490D**

**8 of 8**